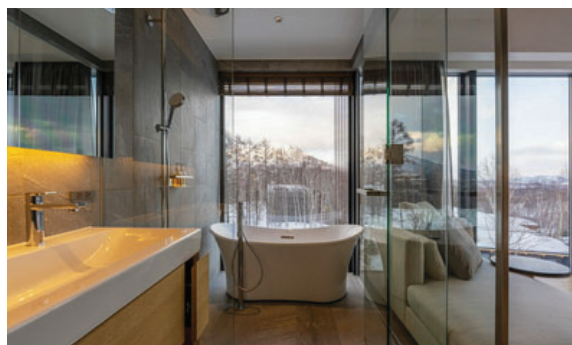


Price: ¥298,000,000



Intution 505

Intuition Niseko is a mix of 32 exquisite apartments from 1 bedrooms to Penthouse's situated in the Intuition Onsen Estate. During the 2018/19 winter the phase one Intuition Estate villa lots sold out in just 30 days. Phase 2 apartments are now available for purchase.

505 is an exceptional 3 bedroom, 3 bathroom apartment on the south corner of the building that focuses its views on Mount Yotei. Finishing in the unit is of the highest standard.

Features include: architecture and design by ALA Architect Ryuya Umezawa (former Chief Project Manager of Kengo Kuma Associates); fantastic location only moments away from the Ace Family quad ski lift, as well as the town center, whilst retaining natural views; building amenities include men's / women's natural hot spring (onsen), restaurant, ski lockers, and hotel front desk services; and full management package in place for total hands free investment.

Visit our sales office at 1F, 1-1, Niseko Hirafu 2-jo 3-chome

Web www.nisekorealty.com Phone +81 (0)136 55 8776

Email joy@nisekorealty.com Email elyse.io@nisekorealty.com Email kirsten@nisekorealty.com



Hirafu



3



3



138.7 m2



Yes

