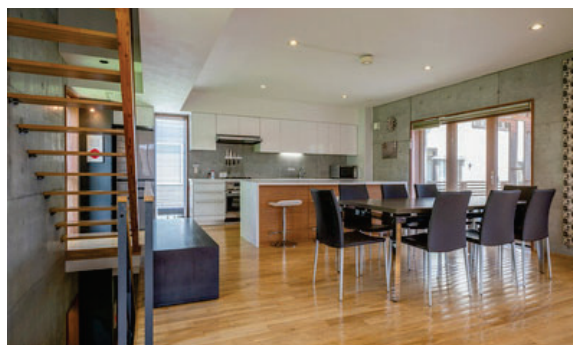


Price: ¥300,000,000



Ise Kon K Middle Hirafu

Ise Kon K is the perfect chalet for both a family or a group of friends. Built with excellent quality, incorporating a seamless, concrete finish.

This property is excellently located in a quiet area in middle Hirafu, only 6 mins walking distance to Ace family lift and few steps away from bars, restaurants and shops in lower Hirafu.

This property features 4 bedrooms, two of which are ensuite, 3 bathrooms and a spacious laundry/dry room. The open plan lounge and dining areas are next to a fully equipped kitchen, which is perfect for a group to relax and spend quality time together. A relatively large deck is located right next to the kitchen; the perfect space to relax and have barbecues during the summer. There is a conveniently located open garage on the first floor, taking away any stress of snow clearing your vehicle during the winter.



Middle Village



4



3



208 m2



331 m2

Visit our sales office at 1F, 1-1, Niseko Hirafu 2-jo 3-chome

Web www.nisekorealty.com Phone +81 (0)136 55 8776

Email joy@nisekorealty.com Email elyse.lo@nisekorealty.com Email kirsten@nisekorealty.com

