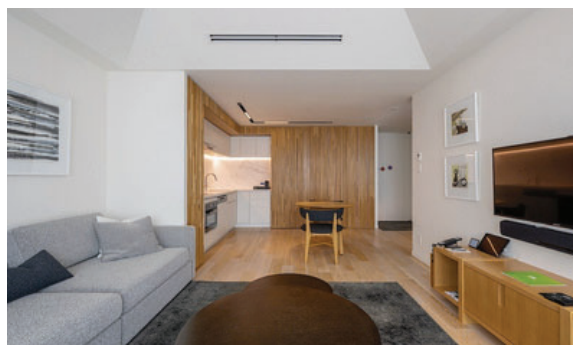


Price: ¥140,000,000



Skye Niseko 309

Skye Niseko is a stunning collection of 96 apartments and penthouses, forming the first privately owned condominium-hotel located within the breathtaking Hokkaido National Park. The development's unique location, elevated above the village of Hirafu, forms the very foundation of the exclusive Skye Niseko experience and provides skiers with direct ski-in ski-out access to all major lift systems in scenic Grand Hirafu.

Extraordinary vistas from each room that dazzle day and night. A quality of workmanship and breadth of luxury that will always impress. Niseko's landscape, charming culture and incomparable scenery are timeless.

SKYE Niseko 309 presents a rare opportunity to pick up a 1 bedroom unit which has views up to both the Alpen and Kogen ski slopes of Grand Hirafu. Also of note: 1 bedroom units are quite popular in the rental pool!



Upper Hirafu



1



1



47 m2



Yes

Visit our sales office at 1F, 1-1, Niseko Hirafu 2-jo 3-chome

Web www.nisekorealty.com Phone +81 (0)136 55 8776

Email joy@nisekorealty.com Email elyse.lo@nisekorealty.com Email kirsten@nisekorealty.com

